

# OPERATOR'S SAFETY MANUAL



## TRACBUSTER

INSTALLER/CONSUMER  
OPERATION AND SAFETY MANUAL

PLEASE READ THIS MANUAL  
BEFORE ASSEMBLING AND  
OPERATING THIS TOOL

### **WARNING**

IF THE INSTRUCTIONS IN THIS  
MANUAL ARE NOT FOLLOWED  
EXACTLY, SEVERE DAMAGES  
COULD OCCUR, CAUSING  
PROPERTY DAMAGE,  
PERSONAL INJURY OR LOSS OF  
LIFE

### **FOR YOUR SAFETY**

*SERVICE MUST BE PERFORMED BY A  
QUALIFIED HYDRAULIC SPECIALIST.*

**DO NOT** MODIFY TOOL IN ANY WAY

**ALWAYS** INSPECT TOOL BEFORE USE

**DO NOT** USE TOOL FOR OTHER THEN  
INTENDED PURPOSE

**DO NOT** USE TOOL IF DAMAGED



**HEAVY EQUIPMENT  
REPAIR LTD.**  
**MACHINE SHOP • INDUSTRIAL SUPPLIES • HEAVY TRUCK PARTS & SERVICE**

404 BALSAM ROAD NE \* BOX 2343 \* SLAVE LAKE, AB \* CANADA \* T0G 2A0

**DO NOT DISCARD MANUAL. KEEP FOR FUTURE REFERENCE**



## ***INSTRUCTIONS FOR USING TRACBUSTER 1500©***

**CAUTION:** This tool must be operated by qualified, competent trained personal only! Failure to do so can result in damage persons and property.

User must wear safety glasses.

**Tracbuster 1500©** may be used with any manual, electric, or pneumatic hydraulic supply

**DO NOT** exceed 10,000 psi pressure into the cylinder. A reservoir with a capacity of at least 140cu in. is required. Failure to comply may result in damage to the tool and or persons.

### ***To remove a master pin***

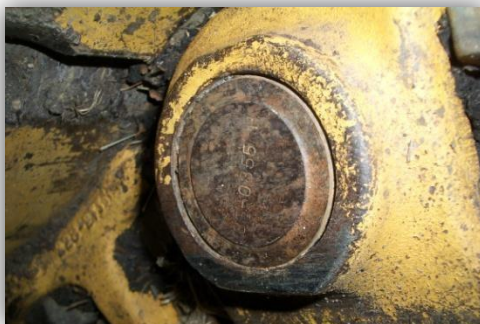
1. *Position the tracked machine on a hard level surface, with sufficient room to work.*
2. *Loosen track by releasing grease from track adjuster or idler.*

Most machines have a separate pressure release valve.



**DO NOT** release pressure by removing grease fitting. Failure to comply may result in injury caused by pressurized grease leaving the fitting.

3. *Locate the master pin. (Most master pins have a dimple machined into the end of the pin).*



4. *Move the machine to position the master pin about 20-30 deg from the vertical center line of the idler. At the same time block track just*

*under the idler high enough to keep the track from falling to the ground when the pin is removed.*



## ***INSTRUCTIONS FOR USING TRACBUSTER 1500©***



*5. Remove two pads, one on each side of the master pin.*

*6. Assemble the **Tracbuster 1500©** with the cylinder rod facing towards the press frame and torque the assembly bolts to 200*

*ft-*



*lbs.*

*7. Choose the largest anvil possible to bring the chain link as close to the cylinder as possible.*



Anvils may  
de-burred to  
consistent

need to be occasionally  
allow for a more  
inside.



# TRACBUSTER

## ***INSTRUCTIONS FOR USING TRACBUSTER 1500©***

8. *Adjust the support chains so that the **Tracbuster 1500©** is balanced lengthwise and angled to the side to coincide with the position of the master pin.*



9. *Hang the **Tracbuster 1500©** over the master pin at the proper angle, with the cylinder in straight alignment with the link and pin, and anvil centered over the opposite end.*





Remove the cap on the end of the cylinder which is held in place by two set screws. The recess under the cap is designed to hold the pusher pin straight. Place the larger end of the pusher pin in the recess on the end of the cylinder and secure with set screws.



**ALWAYS** use the largest pin to move the master pin the first 1/4".

**NEVER** use any of the other pins to start the master pin.

**NEVER** push a pin that is not square and flat on the end.

**DO NOT** place any body parts between the master pin, starter pin, and cylinder.

Pins that are not square and flat may need to have a small amount of weld applied and ground flat.

## ***INSTRUCTIONS FOR USING TRACBUSTER 1500*** ©

10. *Slide the guard over the pusher pin and secure in place.*



11. *Slide the guard over the pusher pin and secure in place*



**ALWAYS**  
**ALWAYS** keep pin  
operating personnel



wear safety glasses  
exit area clear from  
until pin is fully removed.

12. *Start applying pressure, being sure that the pusher pin stays in alignment and does not bend.*

13. *Severely rusted pins may require the link to be heated to get them started.*



**DO NOT** use bent or damaged pins. Replace with new ones.  
**DO NOT** use Tracbuster 1500© if the guard is damaged.  
**DO NOT** use hands if misalignment occurs while under pressure. **ALWAYS** release pressure before adjusting alignment.

14. *Push the master pin the first ½" with the starter pin and then, if necessary, replace it with the largest pin supplied with the **Tracbuster 1500©** that will fit in the pin hole. Follow steps 11-14.*



***INSTRUCTIONS FOR USING TRACBUSTER 1500©***



*15. Continue pushing the pin all the way through and out the other end.*



removed.

**ALWAYS** keep pin exit area clear from operating personnel until pin is fully

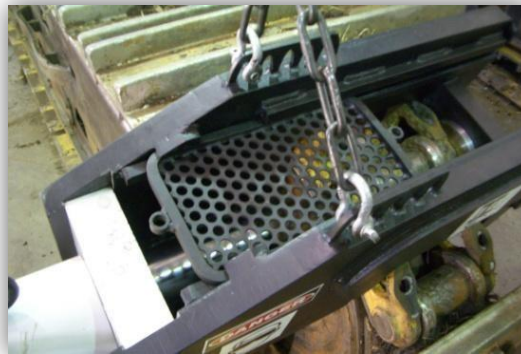
## *To install a master pin*

- 1. Block the track under the idler as described in Step 4 of REMOVING THE PIN*
- 2. Remove one pad on each end of the chain.*
- 3. Pull the two ends of the track together with a chain puller or pry bars and align the bores of the links that are to have the master pin installed.*
- 4. Assemble the **Tracbuster 1500**© pin press with the cylinder rod facing towards the press frame and torque the assembly bolts to 200 ft-lbs*
- 5. Choose the largest anvil possible to bring the chain link as close to the cylinder as possible.*
- 6. Adjust the support chains so that the **Tracbuster 1500**© is balanced lengthwise and angled to the side to coincide with the position of the master pin.*

7. Hang the **Tracbuster 1500**© pin press over the master pin at the same angle as the position of the master pin on the idler and with the cylinder in straight alignment with the link and pin
8. Place the new master pin between the cylinder and the link and apply light pressure to hold the pin in place.

## ***INSTRUCTIONS FOR USING TRACBUSTER 1500© PIN***

9. Check alignment.
10. Position guard over the master pin and secure in place.



**ALWAYS** wear safety glasses.  
**DO NOT** use this tool if guard is damaged.

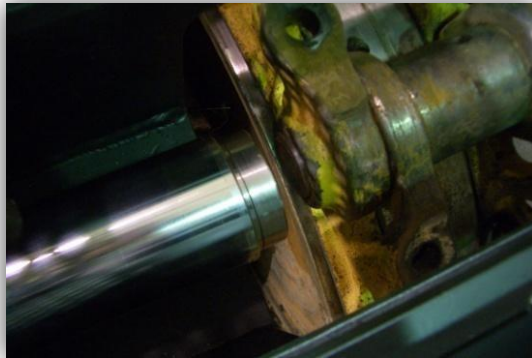
11. Press the master pin into position while constantly monitoring alignment of the cylinder and pin.





12. The master pin is in place if there is approximately 1/8" of the pin extending out of each side of the link.

13. *Tension the track and reinstall the pads to the manufacturer's specifications.*



**TRACBUSTER**