

OPERATION/SAFETY MANUAL



TRACBUSTER

**INSTALLER/CONSUMER
OPERATION AND SAFETY MANUAL**

PLEASE READ THIS MANUAL
BEFORE ASSEMBLING AND
OPERATING THIS TOOL

WARNING

**IF THE INFORMATION IN THIS
MANUAL IS NOT FOLLOWED
EXACTLY, SEVERE DAMAGES
MAY RESULT CAUSING
PROPERTY DAMAGE,
PERSONAL INJURY OR LOSS OF
LIFE**

FOR YOUR SAFETY

*SERVICE MUST BE PERFORMED BY A
QUALIFIED HYDRAULIC SPECIALIST.*

***DO NOT** MODIFY TOOL IN ANY WAY*

***ALWAYS** INSPECT TOOL BEFORE USE*

***DO NOT** USE TOOL FOR OTHER THAN
THE INTENDED PURPOSE*

***DO NOT** USE TOOL IF DAMAGED*



404 BALSAM ROAD NE * BOX 2343 * SLAVE LAKE, AB * CANADA * T0G 2A0

DO NOT DISCARD MANUAL. KEEP FOR FUTURE REFERENCE

INSTRUCTIONS FOR USING TRACBUSTER 2000©



CAUTION: This tool must be operated by qualified, competent, and trained personal only! Failure to do so can result in damage persons and property.

User must wear safety glasses.

Tracbuster 2000© may be used with any manual, electric, or pneumatic hydraulic supply

DO NOT exceed 10,000 psi pressure into the cylinder. A reservoir with a capacity of at least 140cu in. is required. Failure to comply may result in damage to the tool and or persons.

To remove a master pin

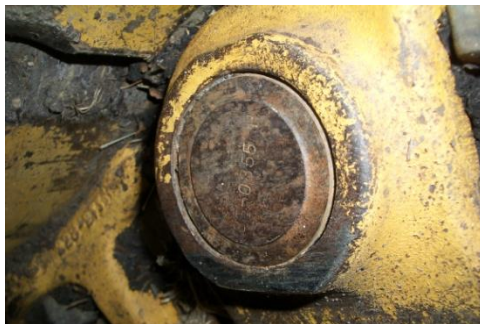
- 1. Position the tracked machine on a hard level surface, with sufficient room to work.*
- 2. Loosen track by releasing grease from track adjuster or idler.*

NOTE: Most machines have a separate pressure release valve.



DO NOT release pressure by removing grease fitting. Failure to comply may result in bodily damage from flying grease fitting or grease.

- 3. Locate the master pin. (Most master pins have a dimple machined into the end of the pin).*



- 4. Move the machine to position the master pin about 20-30 deg from the vertical center line of the idler. At the same time block track just under the idler high enough to keep the track from falling to the ground when the pin is removed.*



INSTRUCTIONS FOR USING TRACBUSTER 2000©

5. Remove two pads, one on each side of the master pin.



6. Assemble the **Tracbuster 2000©** with the cylinder rod facing towards the press frame and torque the assembly bolts to 200 ft-lbs.



7. Choose the largest anvil possible to bring the chain link as close to the cylinder as possible.



Due to normal wear and tear, anvils may need to be occasionally de-burred to allow for a more consistent inside.

INSTRUCTIONS FOR USING TRACBUSTER 2000©

8. Adjust the support chains so that the **Tracbuster 2000©** is balanced lengthwise and angled to the side to coincide with the position of the master pin.



9. Hang the **Tracbuster 2000©** over the master pin at the proper angle, with the cylinder in straight alignment with the link and pin, and anvil centered over the opposite end.



Be sure the start pin rests in the recess on the end of the cylinder.



ALWAYS use the starter pin to move the master pin the first ½”.

NEVER use any of the other pins to start the master pin.

NEVER push a pin that is not square and flat on the end.

DO NOT place any body parts between the master pin, starter pin, and cylinder.



Pins that are not square and flat may need to have a small amount of weld applied and ground flat.

INSTRUCTIONS FOR USING TRACBUSTER 2000©

10. Slide the guard over the pusher pin and secure in place.



ALWAYS wear safety glasses

ALWAYS keep pin exit area clear from operating personnel until pin is fully removed.



11. Start applying pressure, being sure that the pusher pin stays in alignment and does not bend.

14. Severely rusted pins may require the link to be heated to get them started.



DO NOT use bent or damaged pins. Replace with new ones.

DO NOT use Tracbuster 2000© if the guard is damaged.

DO NOT use hands if misalignment occurs while under pressure.

ALWAYS release pressure before adjusting alignment.

15. Push the master pin the first ½” with the starter pin and then, if necessary, replace it with the largest pin supplied with the Tracbuster 2000© that will fit in the pin hole. Follow steps 11-14.



INSTRUCTIONS FOR USING TRACBUSTER 2000©

16. *Continue pushing the pin all the way through and out the other end.*



ALWAYS keep pin exit area clear from operating personnel until pin is fully removed.

To install a master pin

1. *Block the track under the idler as described in Step 4 of REMOVING THE PIN*
2. *Remove one pad on each end of the chain.*
3. *Pull the two ends of the track together with a chain puller or pry bars and align the bores of the links that are to have the master pin installed.*
4. *Assemble the **Tracbuster 2000©** pin press with the cylinder rod facing towards the press frame and torque the assembly bolts to 200 ft-lbs*
5. *Choose the largest anvil possible to bring the chain link as close to the cylinder as possible.*
6. *Adjust the support chains so that the **Tracbuster 2000©** is balanced lengthwise and angled to the side to coincide with the position of the master pin.*
7. *Hang the **Tracbuster 2000©** pin press over the master pin at the same angle as the position of the master pin on the idler and with the cylinder in straight alignment with the link and pin*
8. *Place the new master pin between the cylinder and the link and apply light pressure to hold the pin in place.*

INSTRUCTIONS FOR USING TRACBUSTER 2000[©]

9. *Check alignment.*

10. *Position guard over the master pin and secure in place.*



ALWAYS wear safety glasses.
DO NOT use this tool if guard is damaged.

11. *Press the master pin into position while constantly monitoring alignment of the cylinder and pin.*



The master pin is in place if there is approximately 1/8" of the pin extending out of each side of the link.

12. *Tension the track and reinstall the pads to the manufacturer's specifications.*

