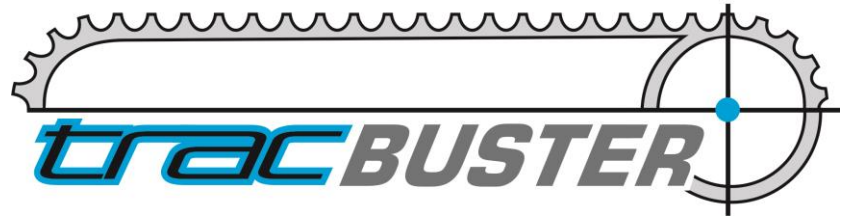


OPERATION/SAFETY MANUAL



By **BARLAN ENTERPRISES**

**INSTALLER/CONSUMER
OPERATION AND SAFETY MANUAL**

**PLEASE READ THIS MANUAL BEFORE
ASSEMBLING AND OPERATING THIS
TOOL**

WARNING

**IF THE INFORMATION IN THIS
MANUAL IS NOT FOLLOWED
EXACTLY, SEVERE DAMAGES
MAY RESULT CAUSING
PROPERTY DAMAGE, PERSONAL
INJURY OR LOSS OF LIFE**

FOR YOUR SAFETY

**SERVICE MUST BE PERFORMED BY A
QUALIFIED HYDRAULIC SPECIALIST.**

DO NOT MODIFY TOOL IN ANY WAY

ALWAYS INSPECT TOOL BEFORE USE

**DO NOT USE TOOL FOR OTHER THEN
INTENDED PURPOSE**

DO NOT USE TOOL IF DAMAGED



404 BALSAM ROAD NE * BOX 2343 * SLAVE LAKE, AB * CANADA * T0G 2A0

**DO NOT DISCARD MANUAL. KEEP FOR FUTURE
REFERENCE**

INSTRUCTIONS FOR USING TRACBUSTER 3000© PIN



CAUTION: This tool must be operated by qualified, competent trained personal only! Failure to do so can result in damage persons and property.

User must wear safety glasses.

Tracbuster 3000© may be used with any manual, electric, or pneumatic hydraulic supply, with 22 liter reservoir capacity, and minimum of 1.5 liter/min volume.

DO NOT exceed 10000 psi pressure into the cylinder. Failure to comply may result in damage to the tool and or persons.

To remove a master pin

1. Position the tracked machine on a hard level surface, with sufficient room to work.
2. Loosen track by releasing grease from track adjuster or idler.

Most machines have a separate pressure release valve.



DO NOT release pressure by removing grease fitting. Failure to comply may result in bodily damage from flying grease fitting or grease.

3. Locate the master pin. (Most master pins have a dimple machined into the end of the pin).



4. Move the machine to position the master pin about 20-30 deg from the vertical center line of the idler. At the same time block track just under the idler high enough to keep the track from falling to the ground when the pin is removed.



INSTRUCTIONS FOR USING TRACBUSTER 3000[®] PIN

5. Remove two pads, one on each side of the master pin.



6. Assemble the Tracbuster 3000[®] with the cylinder rod facing towards the press frame and torque the assembly bolts to 200 ft-lbs.



7. Select the correct anvil for the size of pin being pressed. Install from inside the Tracbuster frame, and secure with snap ring. All tooling is stamped to indicate size.



Anvils may need to be occasionally de-burred to allow for a more consistent inside diameter.

INSTRUCTIONS FOR USING TRACBUSTER 3000[®] PIN

8. Adjust the support chains so that the Tracbuster 3000[®] is balanced lengthwise and angled to the side to coincide with the position of the master pin.



9. Hang the Tracbuster 3000[®] over the master pin at the proper angle, with the cylinder in straight alignment with the link and pin, and anvil centered over the opposite end.



10. Place the starter pin in between the cylinder and the master pin, extend the cylinder just enough to hold the starter pin in place.



Be sure the start pin rests in the recess on the end of the cylinder.



ALWAYS use the starter pin to move the master pin the first 2”.

NEVER use any of the other pins to start the master pin.

NEVER push a pin that is not square and flat on the end.

DO NOT place any body parts between the master pin, starter pin, and cylinder.



11. Slide the guard over the pusher pin.



ALWAYS wear safety glasses

ALWAYS keep pin exit area clear from operating personnel until pin is fully removed.



12. Start applying pressure, being sure that the pusher pin stays in alignment and does not bend.

14. Severely rusted pins may require the link to be heated to get them started.



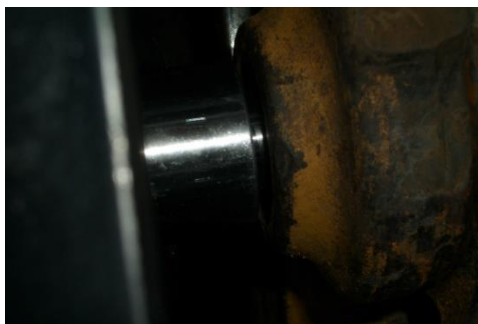
DO NOT use bent or damaged pins. Replace with new ones.

DO NOT use Tracbuster 3000© if the guard is damaged.

DO NOT use hands if misalignment occurs while under pressure.

ALWAYS release pressure before adjusting alignment.

15. Push the master pin the first ½" with the starter pin and then, if necessary, replace it with the largest pin supplied with the Tracbuster 3000© that will fit in the pin hole. Follow steps 11-14.



INSTRUCTIONS FOR USING TRACBUSTER 3000© PIN

16. *Continue pushing the pin all the way through and out the other end.*



ALWAYS keep pin exit area clear from operating personnel until pin is fully removed.

To install a master pin

1. *Block the track under the idler as described in Step 4 of REMOVING THE PIN*
2. *Remove one pad on each end of the chain.*
3. *Pull the two ends of the track together with a chain puller or pry bars and align the bores of the links that are to have the master pin installed.*
4. *Assemble the Tracbuster 3000© pin press with the cylinder rod facing towards the press frame and torque the assembly bolts to 200 ft-lbs*
5. *Select the correct anvil for the size of pin being pressed. Install from inside the Tracbuster frame, and secure with snap ring. All tooling is stamped to indicate size.*
6. *Adjust the support chains so that the Tracbuster 3000© is balanced lengthwise and angled to the side to coincide with the position of the master pin.*
7. *Line up the track links, and install alignment pin.*
8. *Place the new master pin between the cylinder and the link and apply light pressure to hold the pin in place.*

9. *Check alignment.*

10. *Position guard over the master pin.*



ALWAYS wear safety glasses.
DO NOT use this tool if guard is damaged.

11. *Press the master pin into position while constantly monitoring alignment of the cylinder and pin.*



The master pin is in place if there is approximately 1/8" of the pin extending out of each side of the link.

12. *Tension the track and reinstall the pads to the manufacturers specifications.*

